

Claiming
our Gifts

Accompanying
one another into
God's Future

Equipping
All Leaders

Connecting
in Ministry
& Witness

Updates from RMS Global Mission Committee

This past February members of the Global Mission Committee met at the Lutheran Center in Denver to discern what this committee is called to be about in this time and place. Through our time of learning and reflection, we determined that the purpose of the Global Mission Committee is to:

1. **Connect individuals and ministries of the Rocky Mountain Synod with opportunities to:**
 - a. Accompany those currently serving in Global Mission through prayer, sponsorship and/or relationship-building,
 - b. Connect with those who have returned from service through speaking and educational opportunities,
 - c. Become aware of the work of ELCA Global Mission, including opportunities to serve as a missionary, and
 - d. Connect with the Churchwide Office Global Mission Unit.
2. **Support missionaries returning to the RMS by providing opportunities:**
 - a. For support and connection with one another,
 - b. To speak and teach about their service, and to
 - c. Engage in new and existing ministries within the RMS.



One of our first goals this Spring is to help connect individuals and ministries of the RMS with opportunities to accompany those serving with Global Mission in the coming year, including the new Young Adults in Global Mission, who will deploy this coming July.

If you, or the ministry you are a part of, are interested in accompanying one of our missionaries through prayer, sponsorship and/or relationship-building, please email Pastor Diana Linden-Johnson at pastordiana.peaceelp@gmail.com, call her at 915-584-1383

Welcoming Congregations needed!



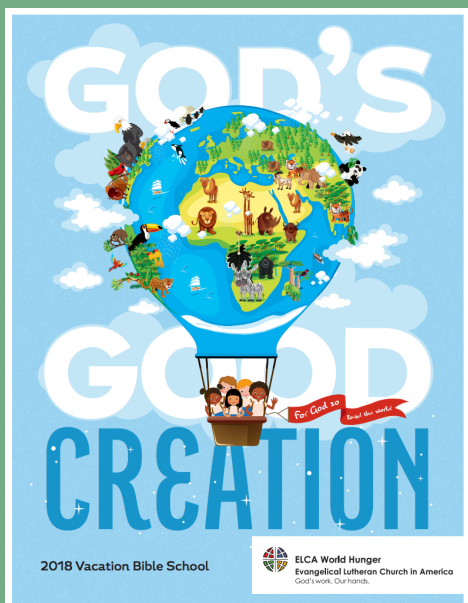
Becoming a Welcoming Congregation is one way you can support migrants as part of AMMPARO (*Accompanying Migrant Minors with Protection, Advocacy, Resources, and Opportunities*)

Welcoming Congregations make four commitments:

- welcome and minister to migrants and identify a contact person in the congregation who has the language skills necessary for basic communication;
- physically accompany migrants as they make new lives in local communities;
- pray for justice for migrants;
- advocate for public policy that will positively impact the current immigration crisis – including working in partnership with the ELCA Washington Office and Lutheran Immigration and Refugee Service on immigration reform.

For more information email Joshual Stallings: joshuastallings94@gmail.com or Pastor Alena Lamirato: pastoralena@yahoo.com

VBS Curriculum from World Hunger



Most congregations have already planned VBS by this time...but, possibly, your congregation might be looking for an inexpensive AND impactful experience!

ELCA World Hunger has produced a new curriculum that helps children learn about hunger, hope, and the work to which God calls us in the world.

The five-day program highlights the world of ELCA World Hunger and includes a schedule, educational activities, skits, plus snack and craft ideas. Order a leader's guide at resources.elca.org (using the ELCA World Hunger tab) or download a copy and other materials at elca.org/hunger/resources.

ELCA WORLD HUNGER'S

GLOBAL FARM



Join us in our year-long, **youth-driven fundraising challenge** to support the agriculture-related programs of ELCA World Hunger. Start raising funds in advance of the **2018 ELCA Youth Gathering** taking place in June. The goal is to raise **\$500,000** to equip communities around the world and in the United States to turn hungry seasons into hopeful ones.

In the Interactive Learning Space in the Houston NRG Center, youth and young adults will have the chance to have an unforgettable experience designed to immerse them in what it is like to be a smallholder farmer around the world.

Check out **ELCA.org/globalfarmchallenge** for more information!



The Young Adults in Global Mission program of the Evangelical Lutheran Church in America (ELCA) invites young adults to embark on a life-changing journey.

**Christ's
Church**
better together



Rocky Mountain Synod
Evangelical Lutheran Church in America
God's work. Our hands.

Connection editor is Deacon Erin Power: epower@rmselca.org. Website is rmselca.org. Facebook is facebook.com/rmselca. An electronic .pdf of this CONNECTION newsletter is posted at rmselca.org/newsletters.