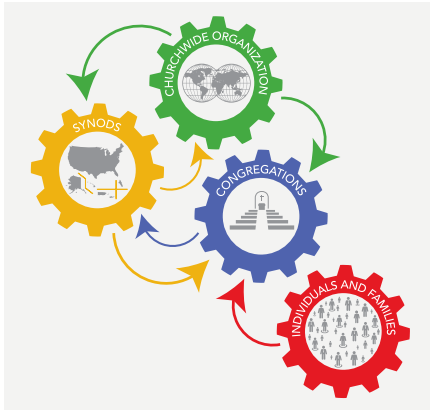




WHERE DOES MY OFFERING GO?

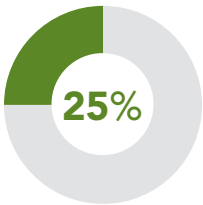


ELCA members in more than 9,300 congregations in the United States and Caribbean give approximately **\$1.75 billion** in regular offering to support ELCA ministries in their local communities and worldwide. When members give through their **congregations**, a percentage of that money is then shared with the local **synod** and the national **churchwide organization**.

This unrestricted giving, called Mission Support, gives us both the foundation and the fuel to do God's work in the world and a portion of the gifts circle back to support ministries in synods and local congregations. Of these unrestricted gifts, the churchwide organization receives around 2.6 percent. This represents the largest portion of the ELCA churchwide organization's operating budget.

Your Mission Support helps fund the following churchwide ministries:

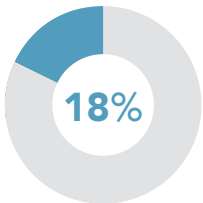
Grow the ELCA in the United States



Plant and support
357 new congregations.

- **Enable congregations to renew their ministries** and reach out to their surrounding communities.
- **Work together** with our African Descent, American Indian and Alaska Native, Arab and Middle Eastern, Asian and Pacific Islander, and Latino/Latina members to develop networks and resources for ministry.
- **Develop and share resources** for faith, discipleship, prayer and worship.

Grow the Lutheran church around the world



Send 230 missionaries in more than 48 countries, and more than 84 Young Adults in Global Mission in 11 country programs.

- **As a member of The Lutheran World Federation, we're in communion with 145 member churches** and directly connected to 85 companion churches in other countries.
- **Accompany new Lutheran churches**, expand ministries, and train leaders and evangelists.

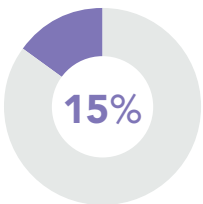
Provide coordination and support for churchwide ministries



1.1 million
Maintain constituent database, including 1.1 million records of rostered and lay leaders, members, donors and congregations.

- **Preserve and maintain archives and historic records** of the ELCA and its predecessor bodies.
- **Provide office space, equipment and human resources** for staff and operations.
- **Process 150,000 gifts** to ELCA ministries.
- **Equip congregations and synods** with resources to assist in risk management and legal matters.

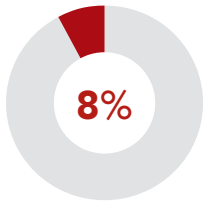
Support and develop current and future leaders in the ELCA



9,900
Recruit, prepare and implement a system for the assignment of 9,900 rostered ministers.

- **Support the work** of seven ELCA seminaries and 26 colleges and universities.
- **Identify, connect and provide** ministry resources and opportunities for networking for lay leaders.
- **Offer events and leadership opportunities** for youth and young adults.

Invest in **technology** and **communications**

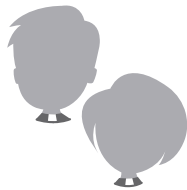


Design and maintain communications tools

to strengthen our Lutheran identity and grow awareness of our church and its mission and ministries.

- **Connect members with one another** through new technology and systems.

Provide **governance** and **leadership**



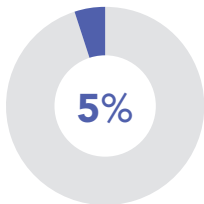
65

Coordinate meetings and support

for 65 synodical bishops.

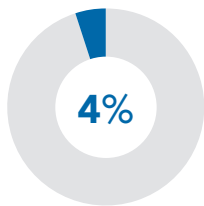
- **Organize lay and clergy leaders from across the church to serve** on the governance boards and committees that provide guidance and oversight for ELCA ministries.

Grow and sustain financial resources



Develop and promote efforts related to stewardship education, financial literacy, mission interpretation and growth in giving to all church ministries.

Address social issues and **work for justice**



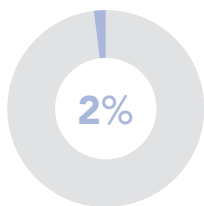
1 in 50

Support social ministry organizations, such as Lutheran Services in America, to impact the lives of **1 in 50** Americans.

- **Engage** in churchwide study and deliberation to create social statements and resources that address social, political, environmental and other public issues.
- **Equip** members and leaders to advocate with lawmakers in order to support policies that promote justice and peace.

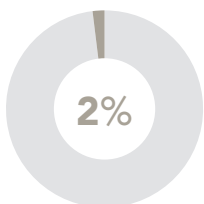
Your designated gifts to ELCA World Hunger and Lutheran Disaster Response provide additional funds annually to address hunger, poverty and suffering around the world.

Engage in **research** and **strategic planning**



Research and analyze trends that impact the ELCA and develop innovative strategies to improve mission and ministry in the 21st century.

Sustain **ecumenical** and **interfaith relationships**



Facilitate dialogue and common action among communities of other faiths, including the development of resources and communications for ELCA congregations.

- **Seek unity in faith and life** with all Lutherans and six full communion partners.