

# Stewardship for All Seasons

A source of financial challenge for many congregational rostered ministers is the culture of scarcity that prevails in many communities of faith. The objective of Stewardship for All Seasons (SAS) is to guide rostered ministers and leaders in the congregation to learn tried and true principles of fundraising and effective methodologies to carry out fruitful, broad-range stewardship programs that enliven a culture of generosity.

**We work from abundance.** From the opening chapters of Genesis depicting a flourishing, fruitful creation, to Jesus' mission articulated in the Gospel of John: "I came that they may have life, and have it abundantly," God promises an abundance of gifts for the life of the world. The *Lilly Endowment National Initiative* and the Rocky Mountain Synod afford 3E abundant resources to support the development of our programs.



Contact Deb Elstad  
3E Associate Program Director for SAS  
deb.elstad@gmail.com, 801-712-5108  
<https://www.rmselca.org/lilly-stewardship>

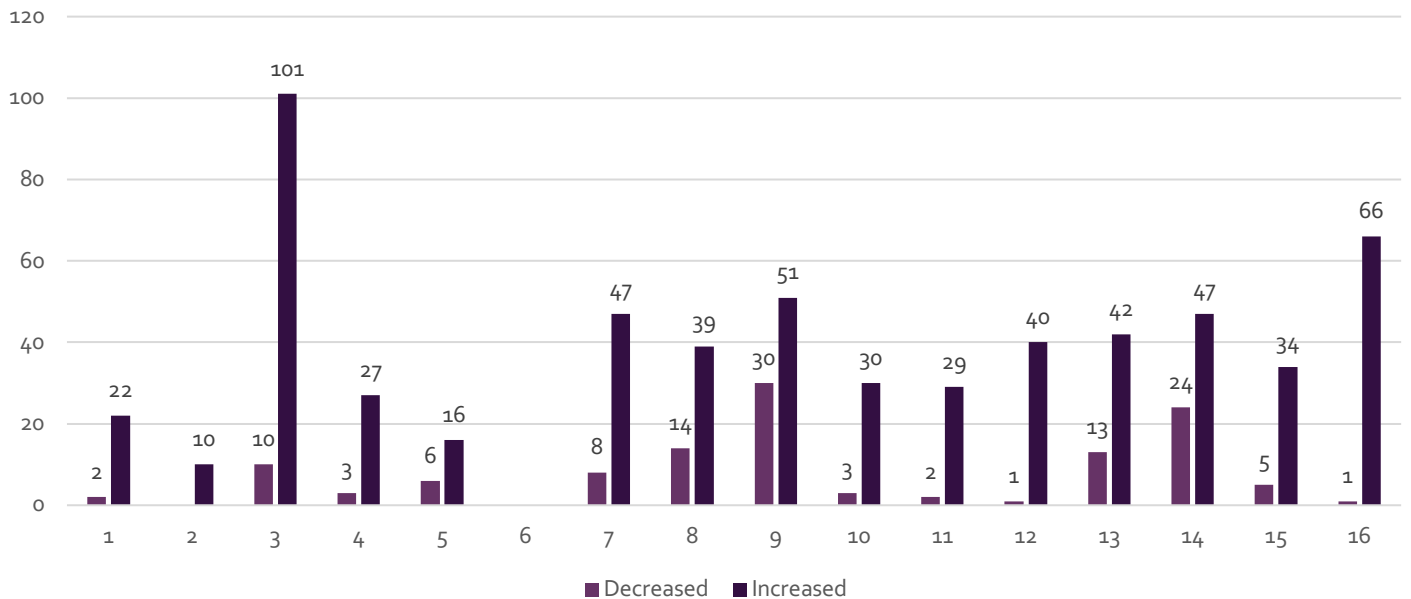
## SAS is Culture-Changing

*"The SAS program changed our perspective on stewardship by focusing on generosity. The direction of the consulting firm was very valuable in helping develop a successful campaign. Our fall campaign was successful because with the direction of GSB [the consulting firm] we focused on generosity and its importance to meet our ministry initiatives. It was appreciated by our members to have objective ministry initiatives to focus on rather than just the idea that we need to increase giving or tithing."*

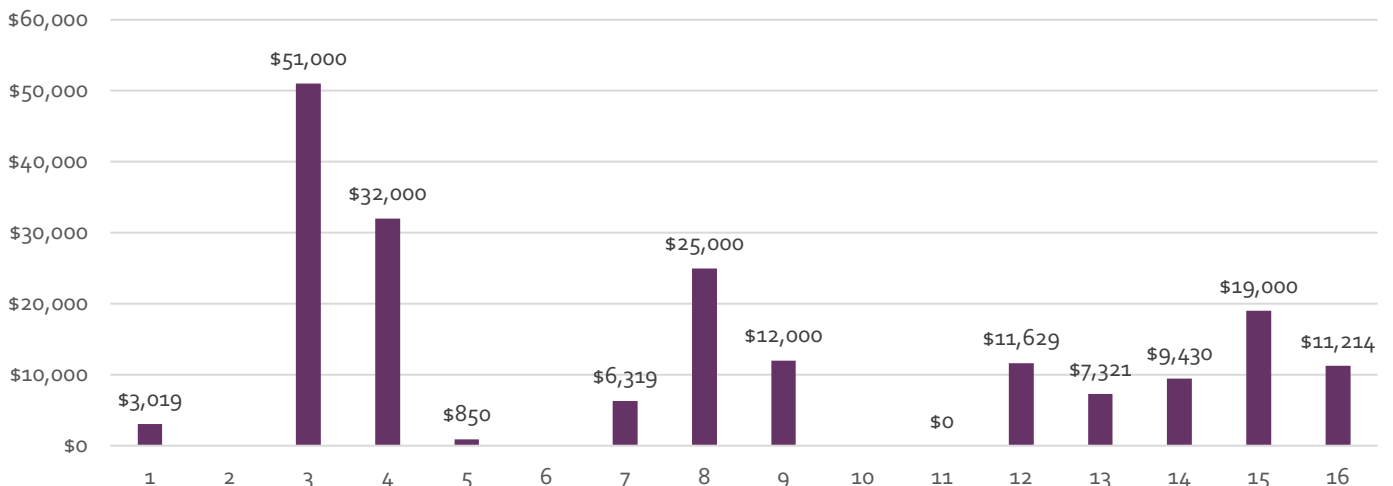
~ Joe Fangman, Joy Lutheran, Parker, CO

# Results from Congregations that participated in Cohort 3 (2019-2020)

### SAS Cohort 3 Number of Donors



### SAS Cohort 3 Anticipated Revenue Change



*“SAS has enabled us to increase our ministry budget significantly to begin empowering ministry by moving pastoral time and compensation from 1/2 to 3/4 time. We also made the commitment with that appeal to increase our giving to Synod by \$1000. These are significant increases for such a small congregation. We are excited to be growing in ministry while growing our ability to give to the Synod. We appreciate the benefits of the Lilly Grant that empowered us to participate in SAS which in turn empowered us to grow our ministry impact.” ~ Pr. Wendy Kalan, Shepherd of the Valley, LaSalle, CO*